

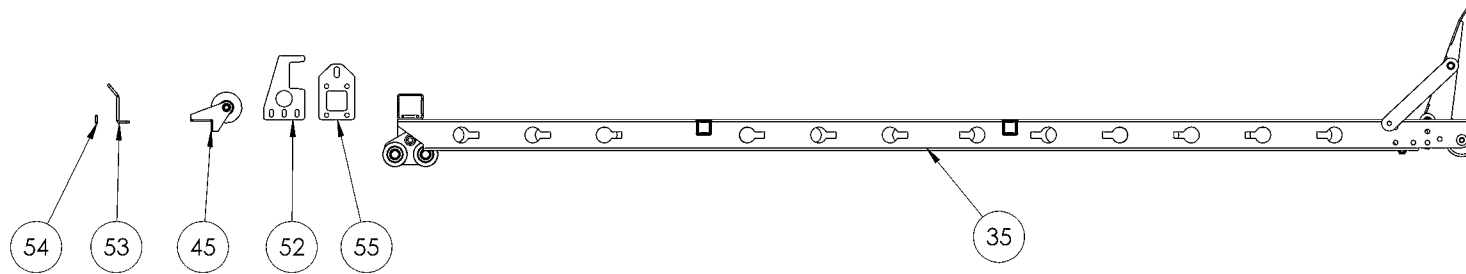
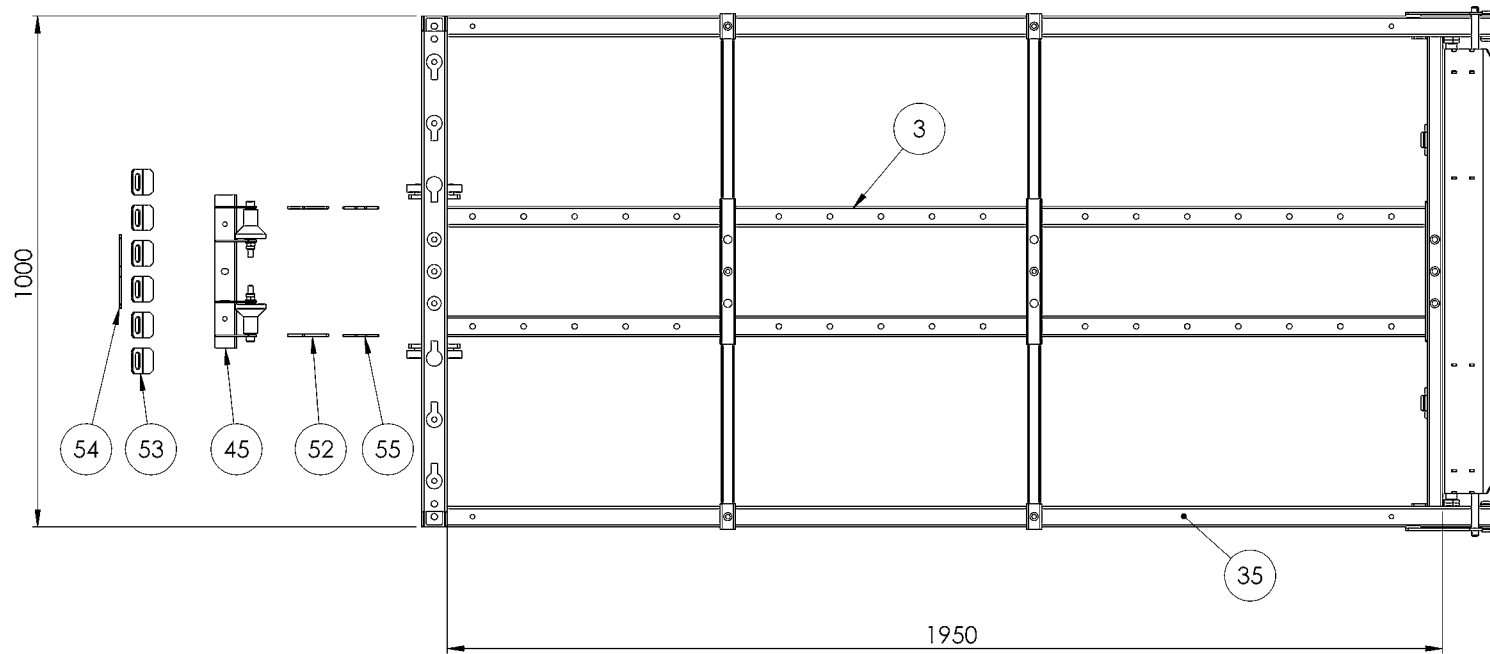
AC 008 Cargo Loader Install Manual

Revision 01, January 2023

Component Listing	2
Assembly chassis	4
Attaching AC 008 to a standard ramp	24
Using skids	34



AC 008 complete kit

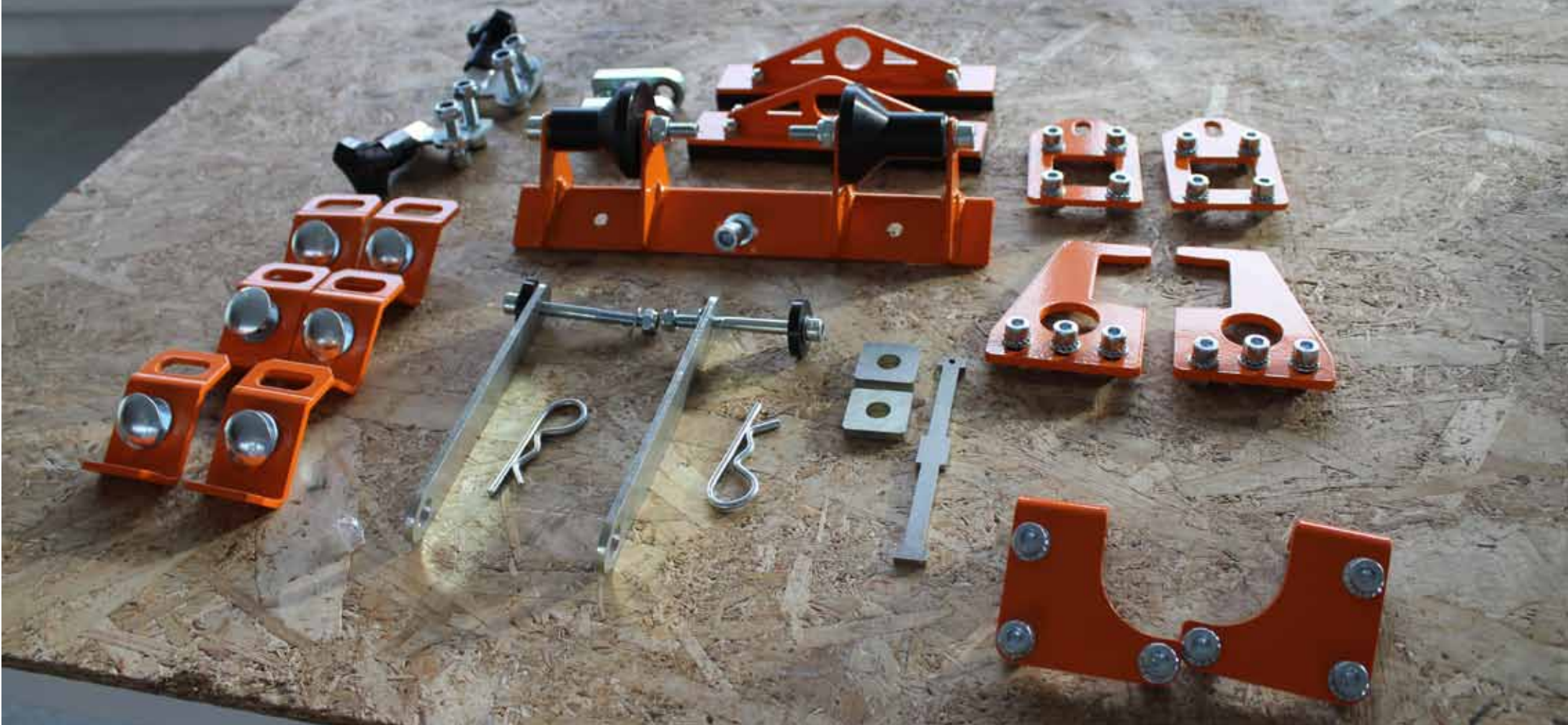


The whole kit weighs exactly 42 kg. If you receive this kit in a cardboard box, make sure you weigh it before accepting it. Anything under 41kg means something is missing.

When you open the box, place the smaller components on a table like on page 3 to make sure you got everything.

- 35 - chassis kit (1 pcs)**
- 45 - roller plate (1 pcs)**
- 52 - front hooks (2 pcs)**
- 53 - cargo lashing brackets (6 pcs)**
- 54 - strap plate (1 pcs)**
- 55 - lock plate**

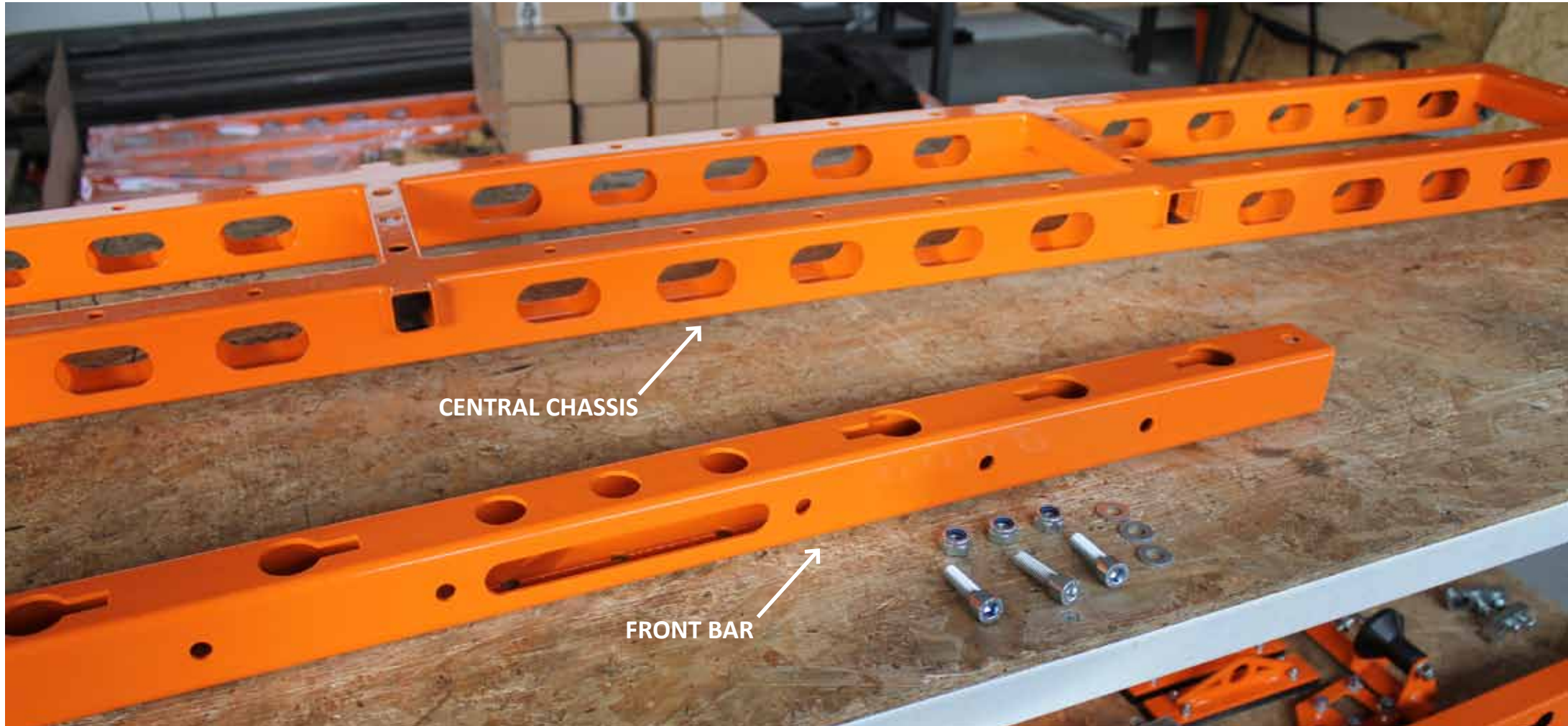
AC 008 smaller parts



An overview of the small components that should be in the box. You will find these in a smaller cardboard box inside the big box where the chassis beams and tailgate are packaged.



Some early kits were delivered with loose roller plates. If that is the case with your kit, use two 16mm washers and the circlips provided to attach the roller plate stub axle like in the picture.



Place the central chassis and the front bar on a table, take out three pcs M10 x 25mm bolts, three lock nuts and six flat washers.

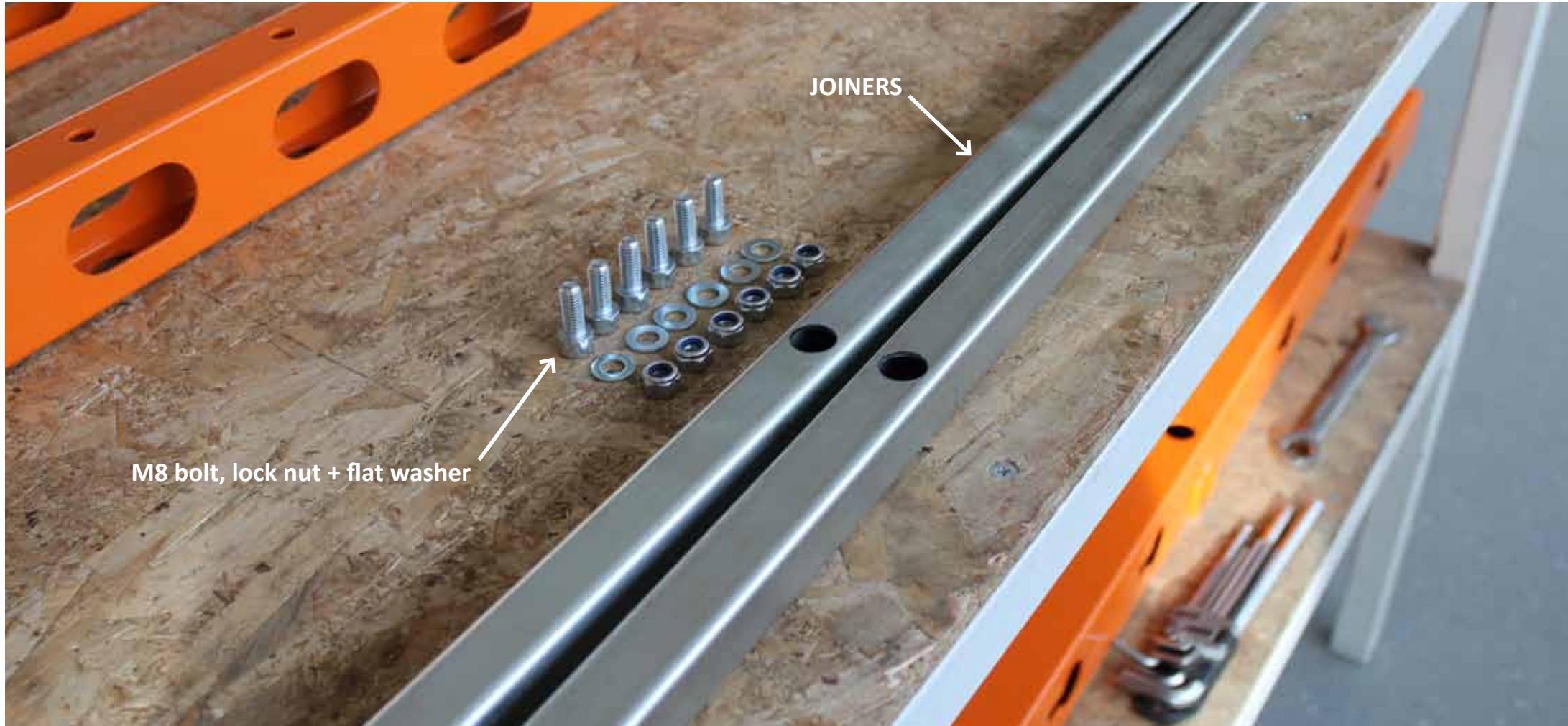


Place the front bar on top of the central chassis at the front of the chassis. There are matching holes in the front bar to match the three top holes of the central chassis. Slide the bolts through those holes.

Make sure the front bar is turned with the oval cut-out towards the central chassis, like in the picture.

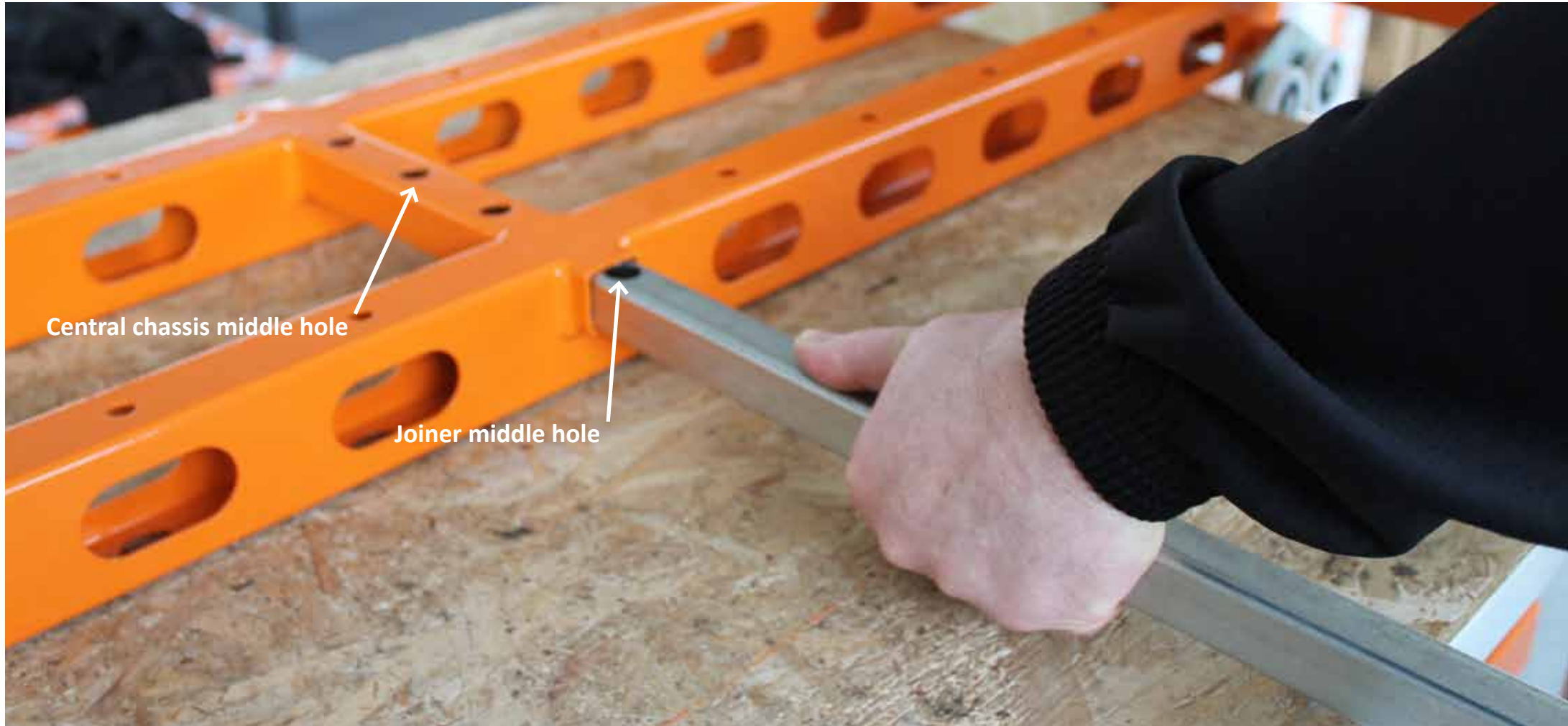


Place a washer and a nut on each bolt and finger tighten them. Do not fully tighten yet.



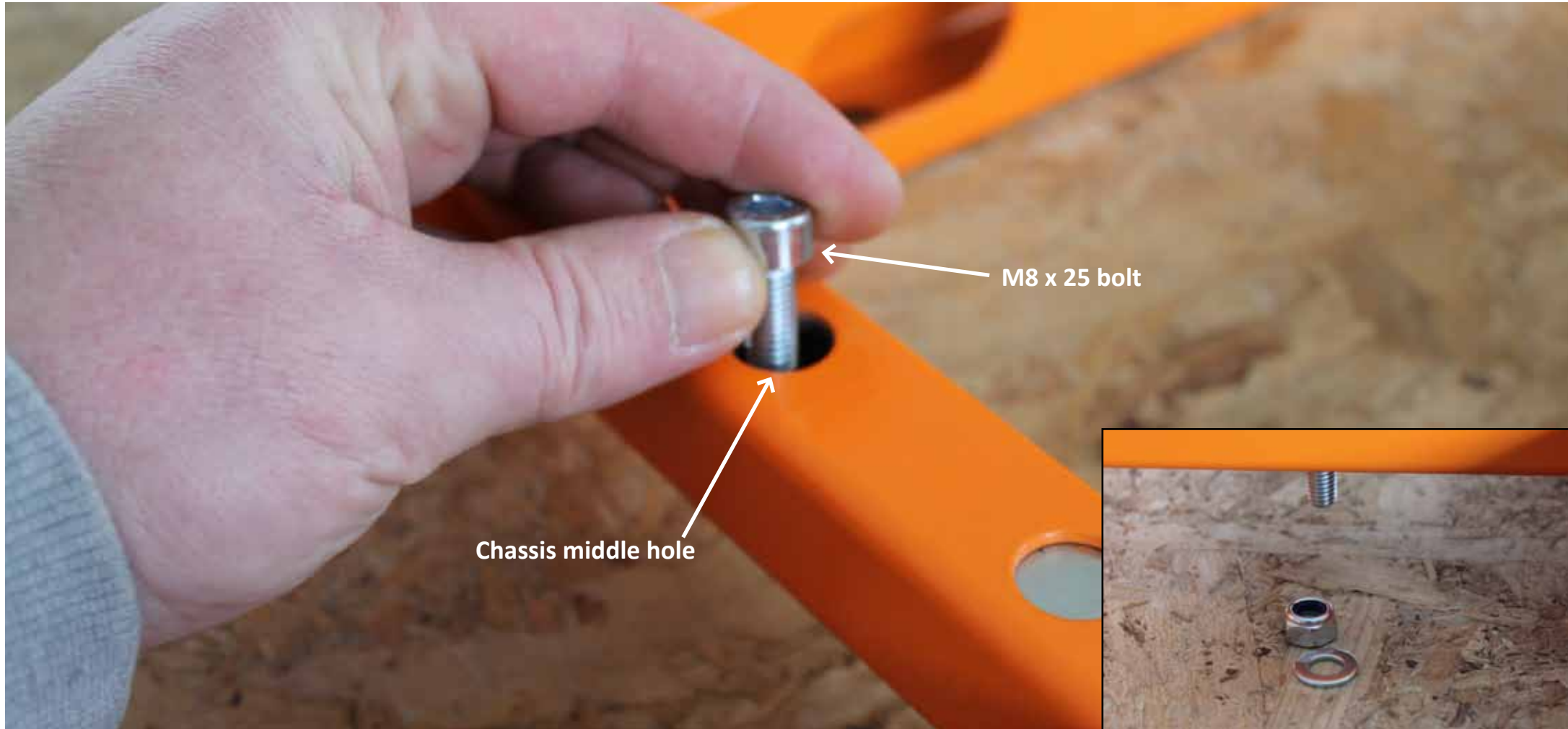
Put the joiners and their nuts and bolts on the table

You will need 6 pcs M8 bolts x 25mm, lock nuts and 6 pcs washers.

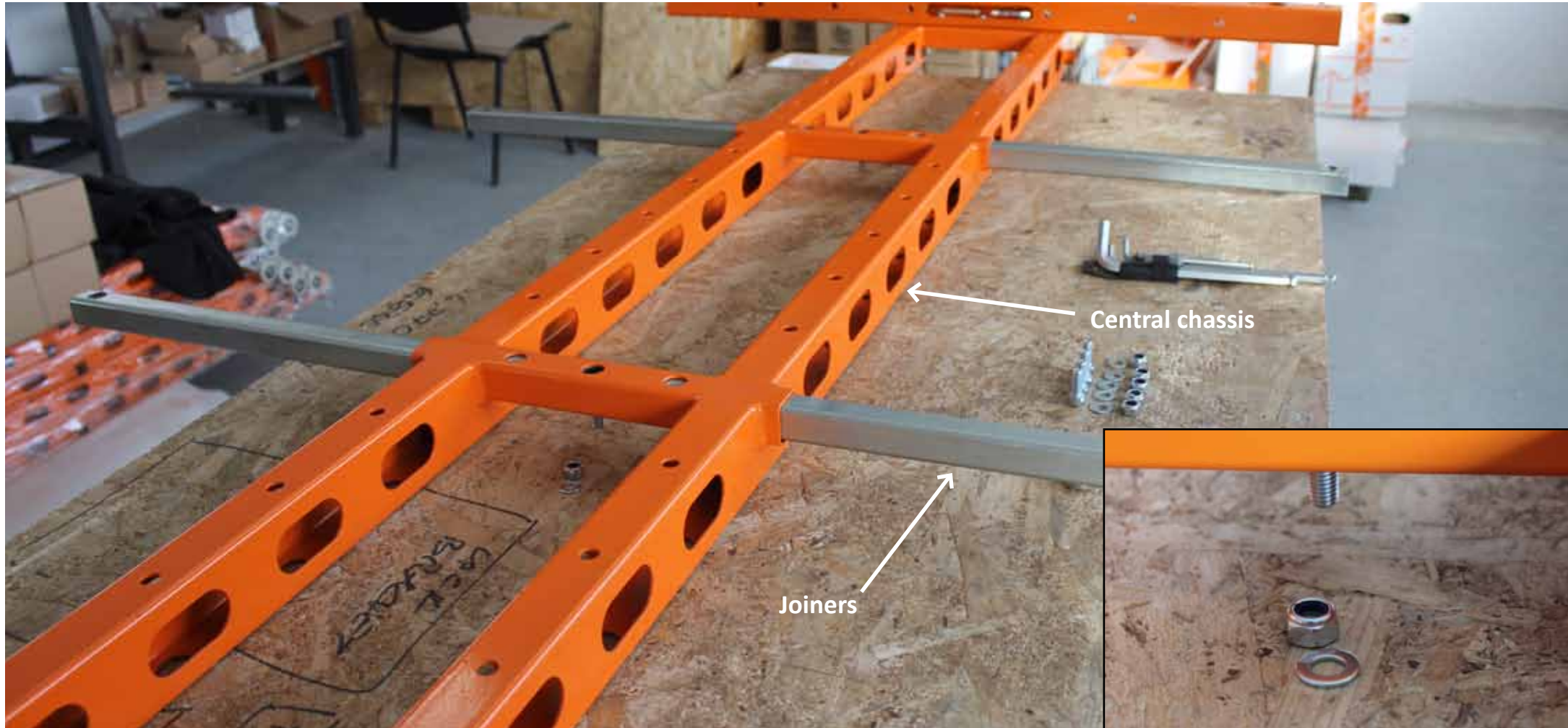


There are three holes in a joiner. With the large diameter holes upwards, slide the joiner until the middle joiner hole lines up with the middle chassis hole.

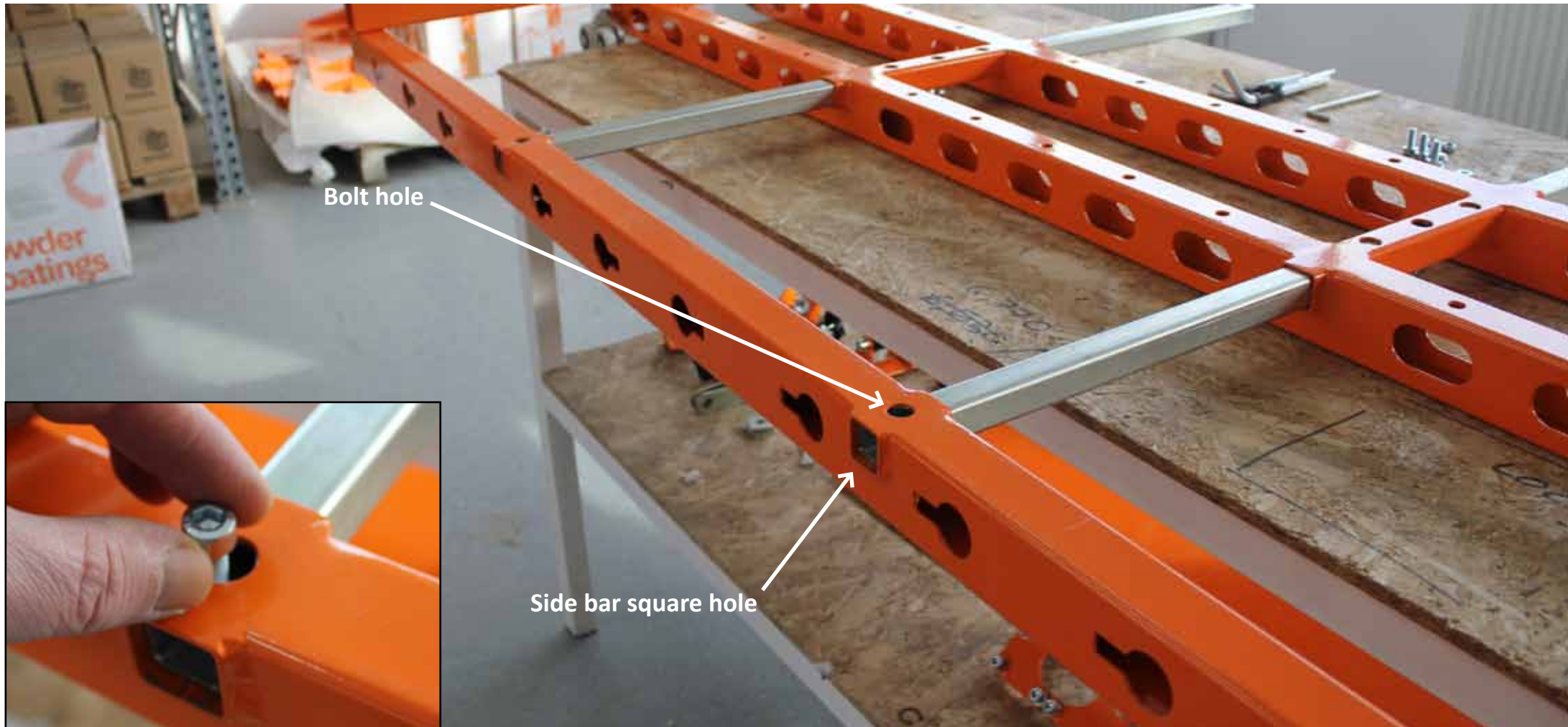
You might need to slightly tap the joiner with a rubber mallet in case some paint is too thick.



Slide an M8 x 25 mm bolt through the matching holes, and attach a flat washer and lock nut at the back - do not tighten yet.

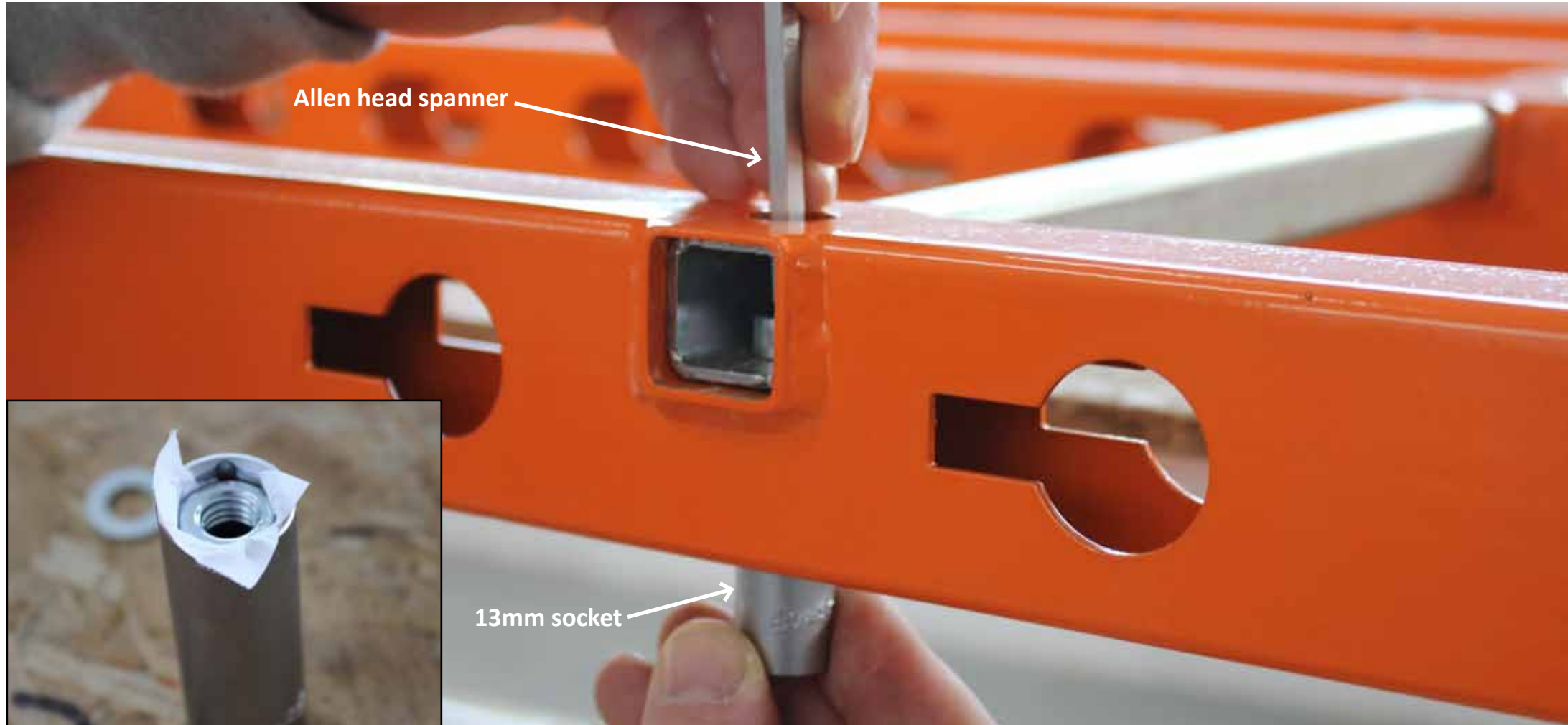


Slide the second joiner through the central chassis too, and attach the M8 bolt, flat washer and lock nut.



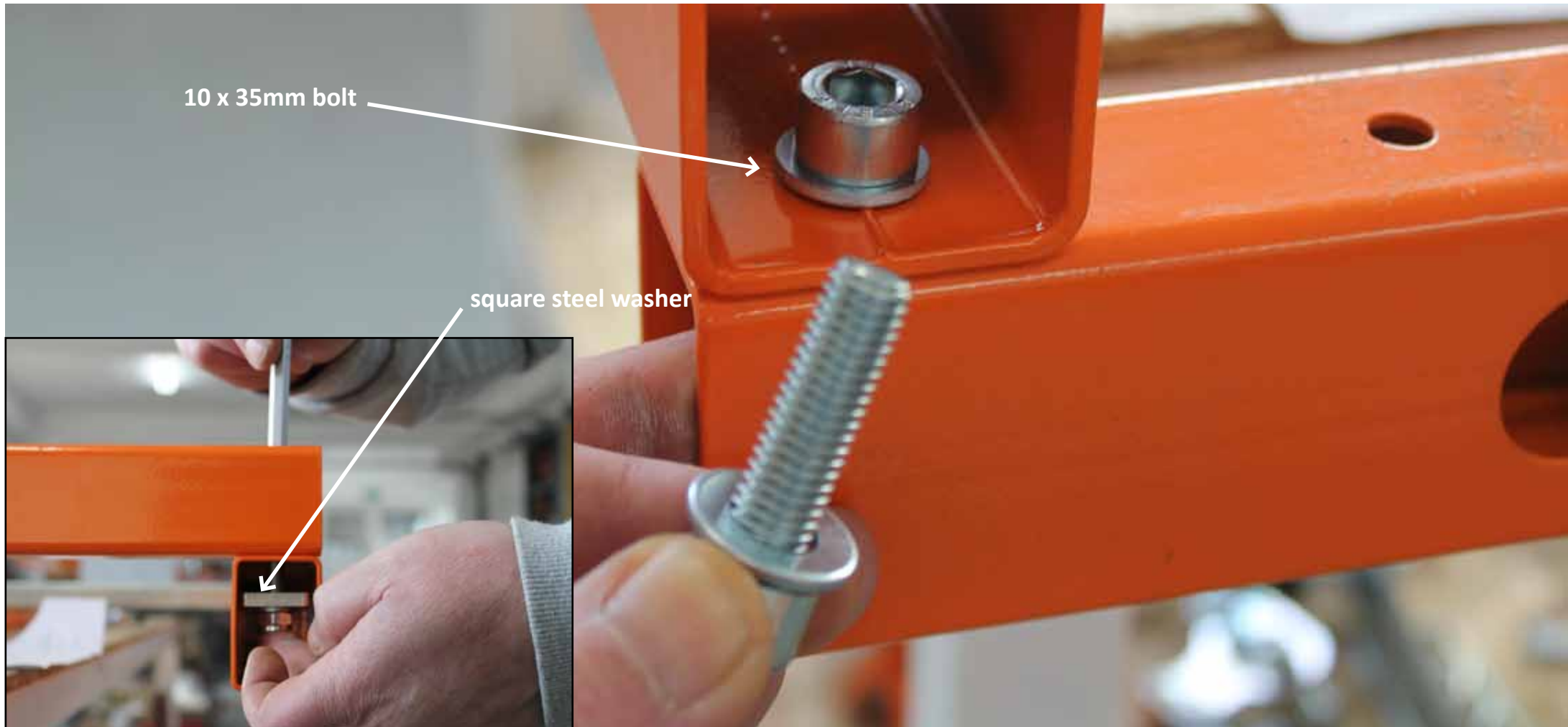
Grab a side bar and slide it on to the joiners. There are square holes in the side bar. With bolt holes on top. The bolt holes in the side bar should match the holes at the extremity of the joiners.

Slide an M8 x 25mm bolt through these holes from the top.



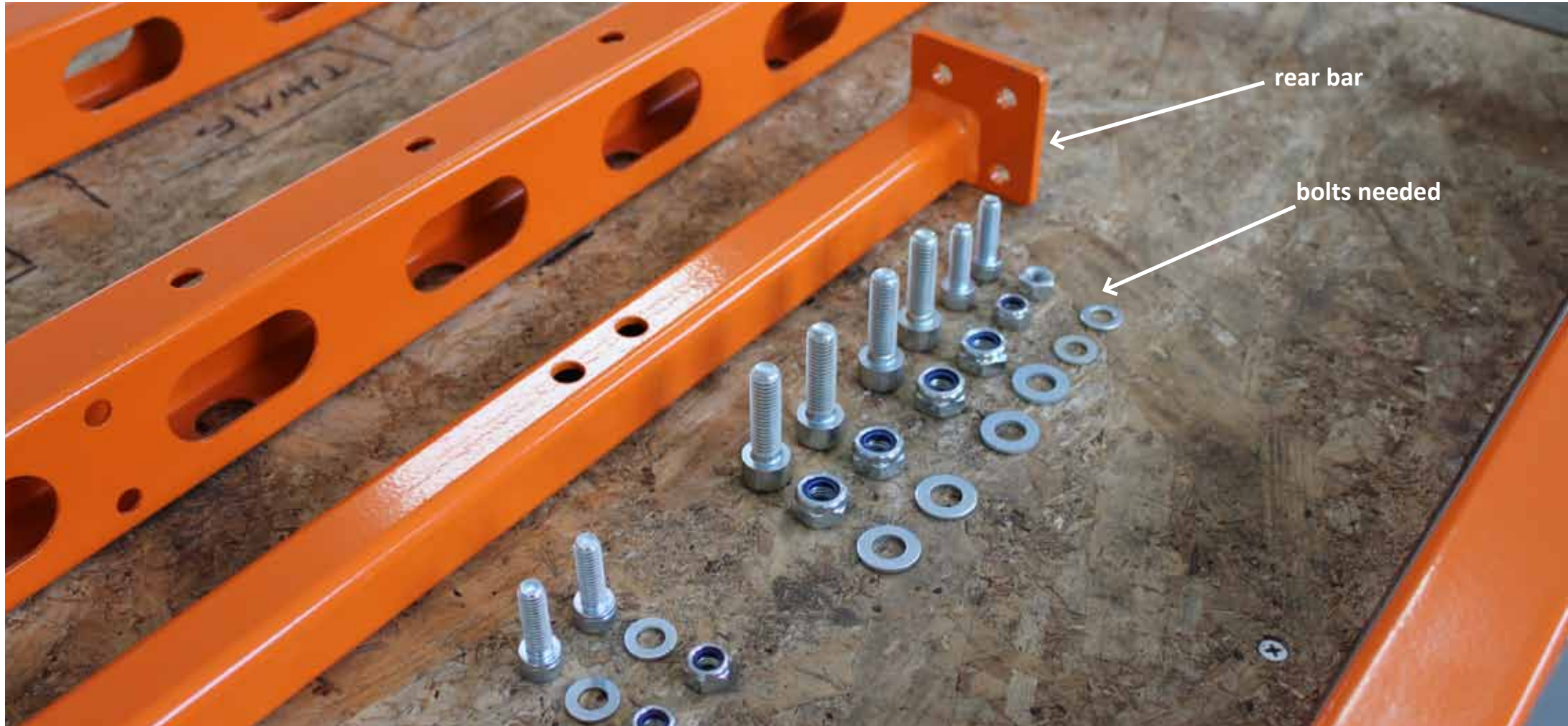
Hold the bolt from the top using an Allen head spanner. To make it easier for you to screw the nut into the bolt from the bottom, use a piece of paper to fasten the nut to a 13mm socket.

Do not tighten yet. Repeat the procedure for all four attachment points where the zinc plated joiners slide through the side bars.



Slide a 10mm bolt, 35mm long, through the hole in the front bar where it joins with the side bar. Slide a square steel washer, flat washer and M10 lock nut. Finger tighten.

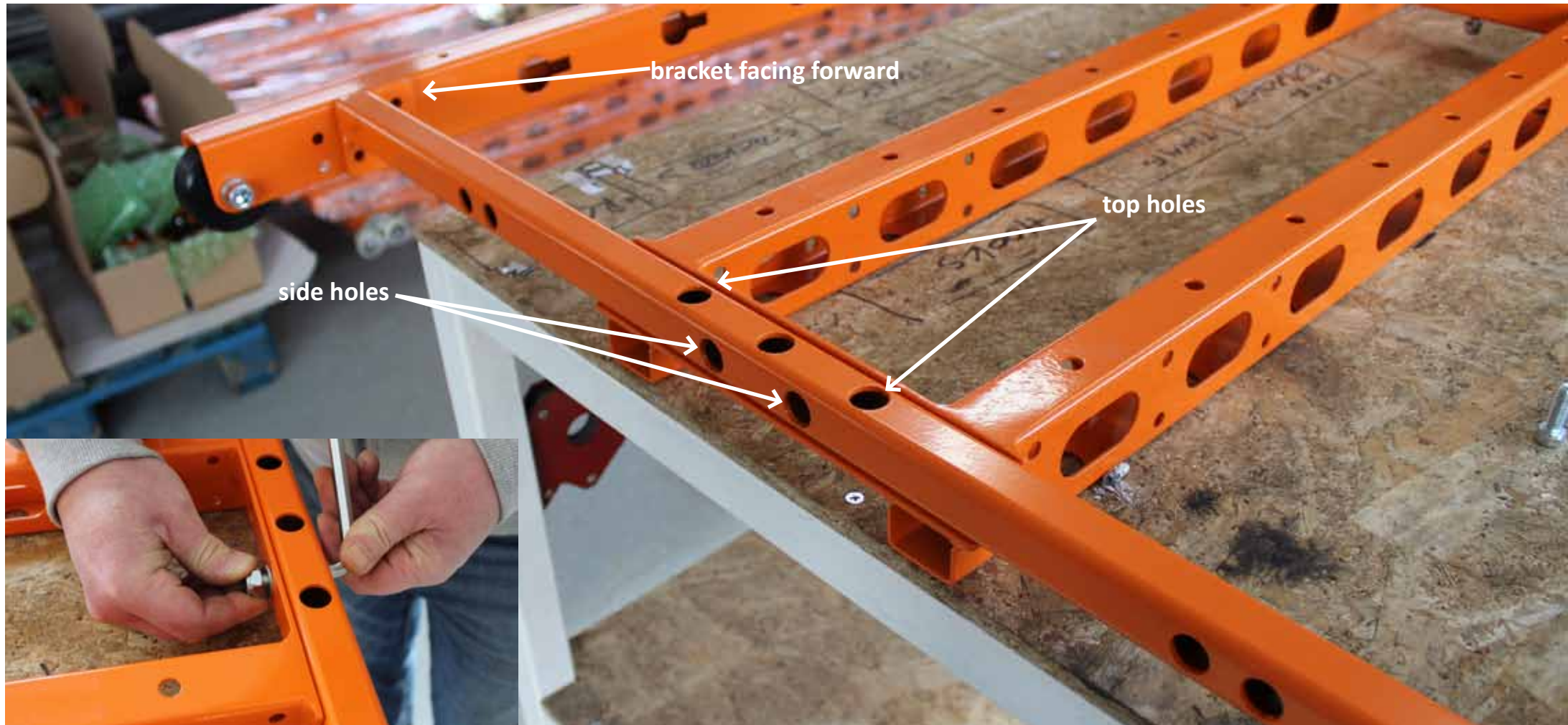
It may help if you hold the washers in place with one hand, while with the other hand you thread that nut on to the bolt like in the picture above. Repeat for the other side.



Prepare the rear bar and its bolts:

4 x M10 with flat washers and lock nuts

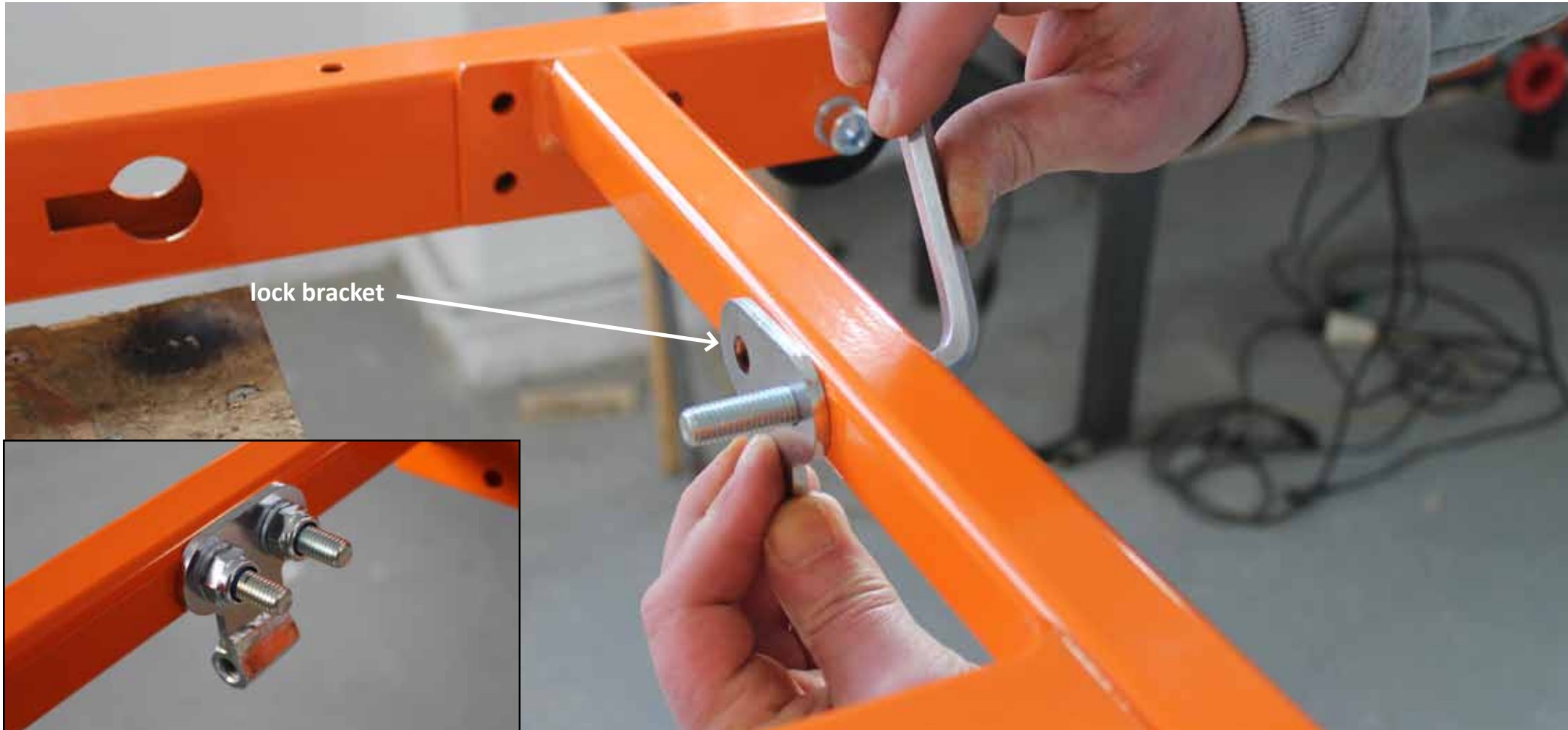
4 x M8 with flat washers and lock nuts



Place the rear bar with the side brackets pointing forward. The three top holes will match the three holes in the central chassis.

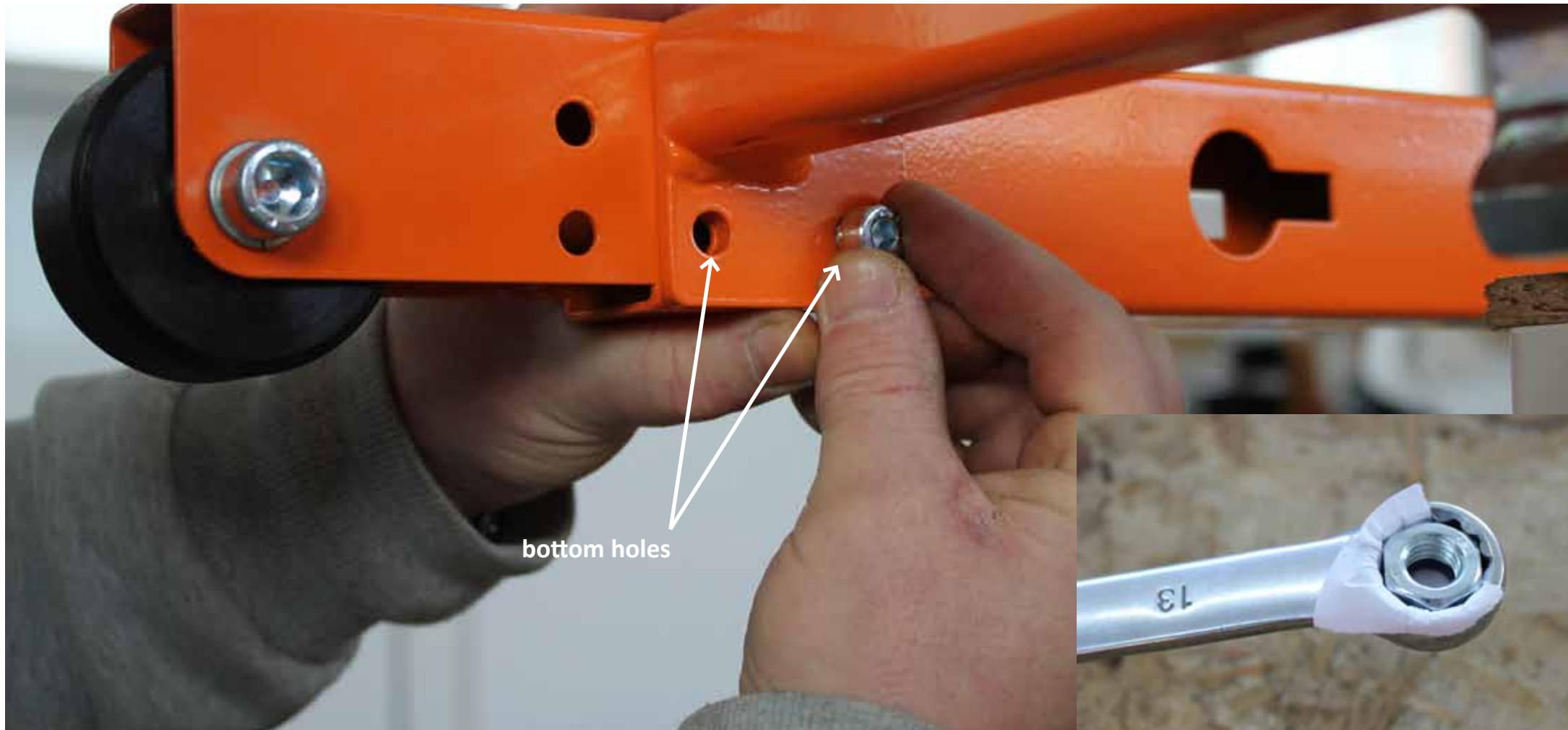
Slide two M10 bolts through the two top holes, and the other two M10 bolts through the rear holes. Use flat washers and lock nuts. Finger tighten.

Then slide two M10 bolts through the side holes, attach flat washers and lock nuts.



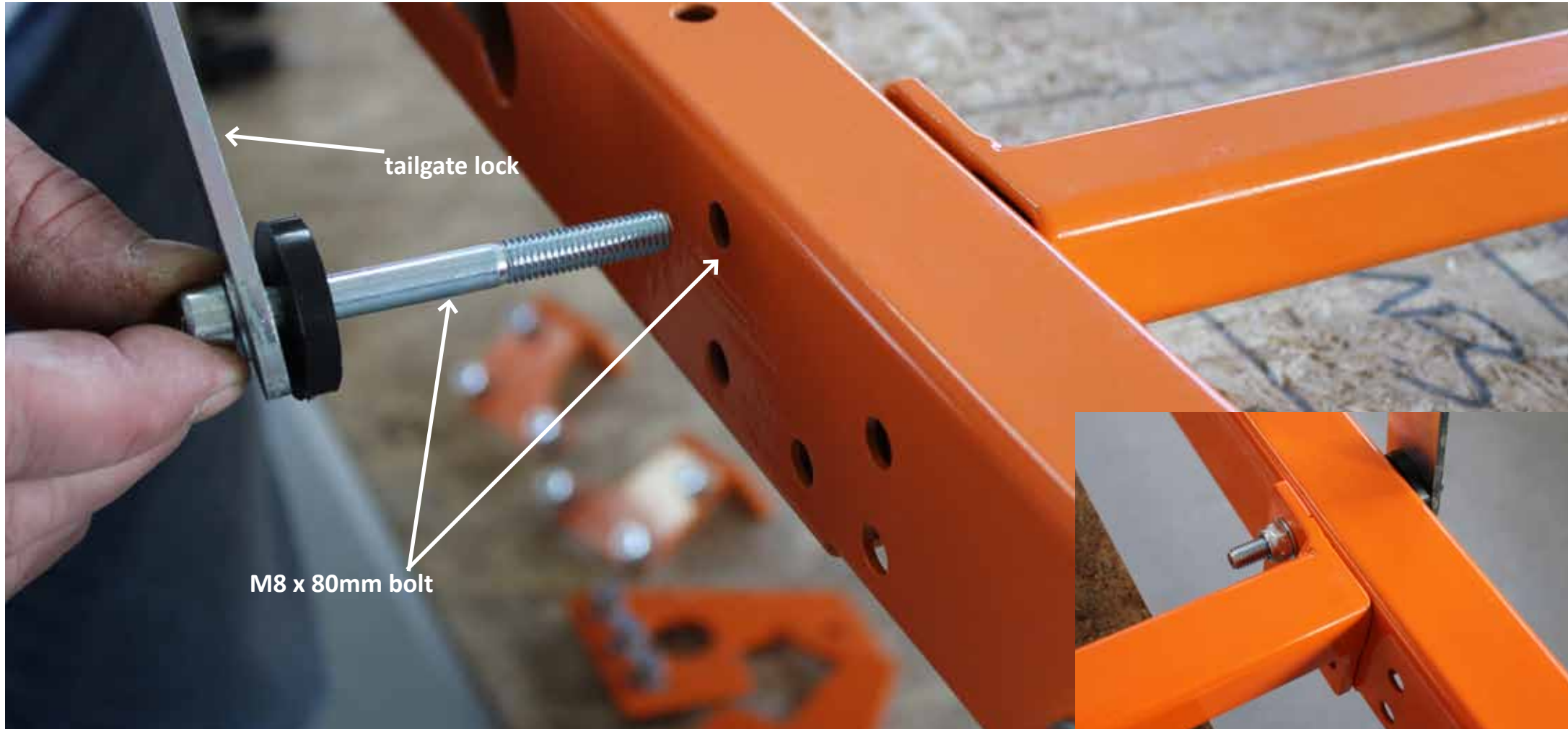
There are two lock brackets provided. Use two M10 bolts for each. Attach the brackets to the inside of the rear bar. Tighten hard the two bolts using flat washers and lock nuts.

Make sure the brackets are horizontal when locking them to the rear bar.



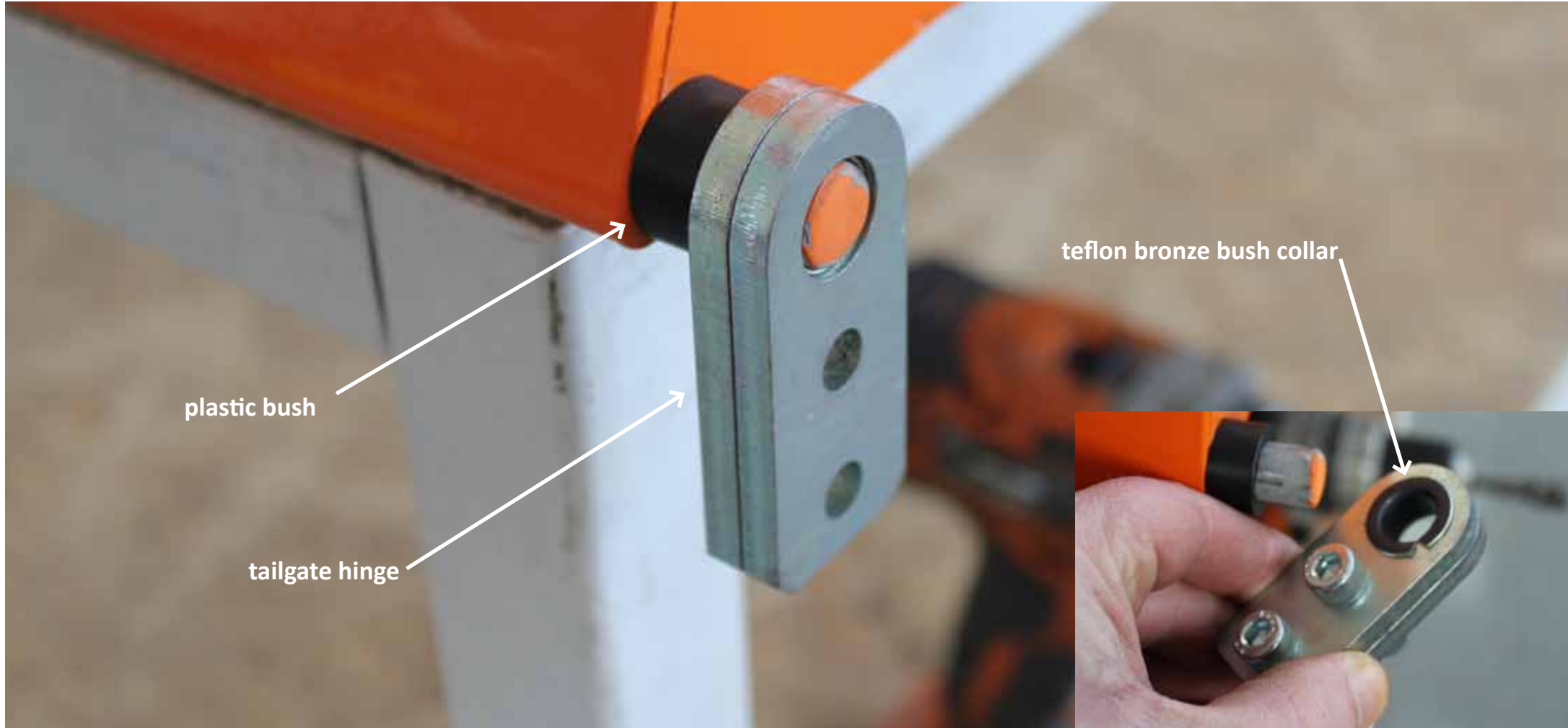
Attach two M8 bolts through the two bottom holes of the rear bracket and lock from behind using M8 lock nuts. It may help to use a spanner, and a piece of paper to keep the nut into the ring spanner.

Then slide the spanner until you see that the nut is in front of the hole. Insert the bolt and finger tighten. Repeat for the other side.

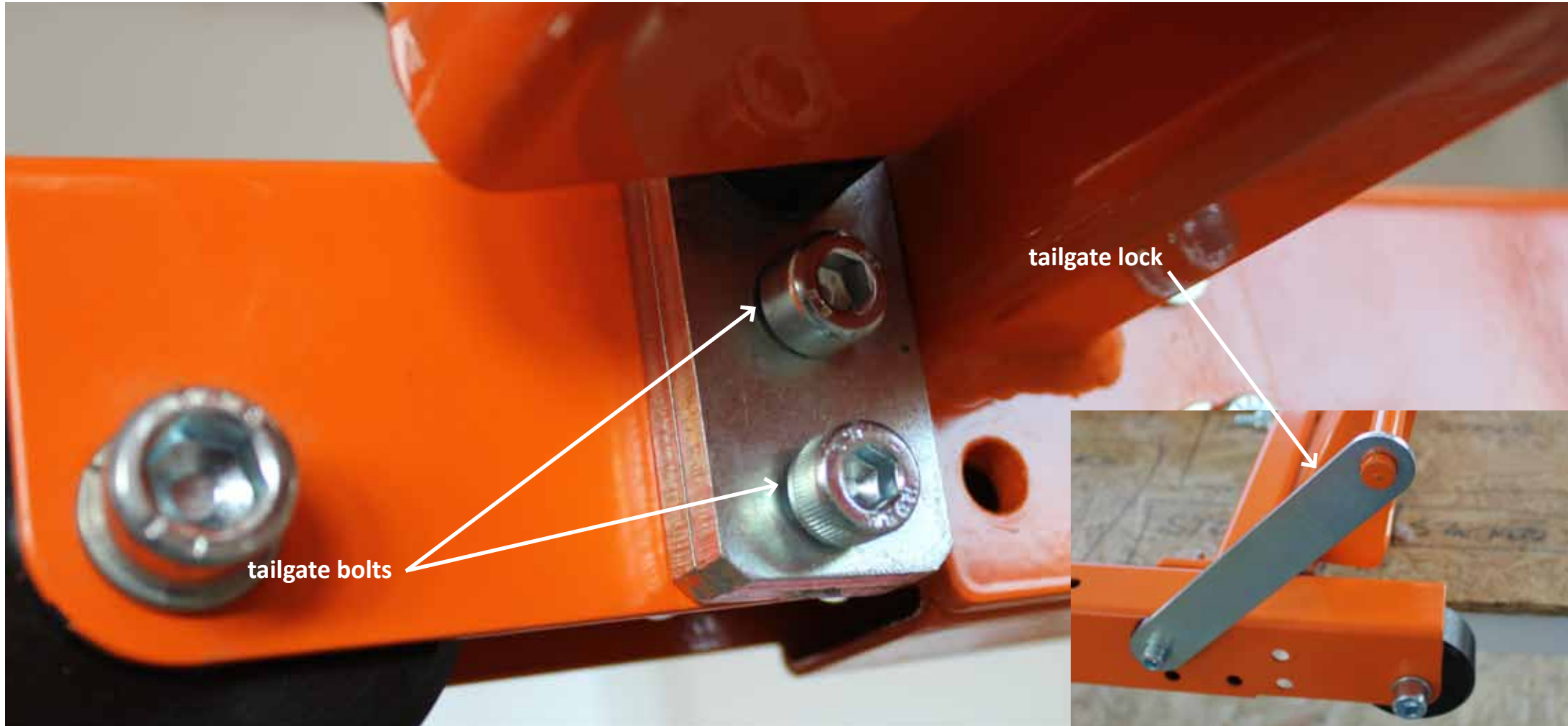


Slide the M8 x 80mm bolt from the outside of the chassis towards the inside, with the plastic washer between the zinc plated tailgate lock and the side bar.

Use a flat washer and lock nut to tighten. Tighten so that you can manually turn the tailgate lock by hand.



Slide the two tailgate hinges on to the tailgate pins. Make sure the tailgate hinge is turned with the bush collar towards the plastic bush.



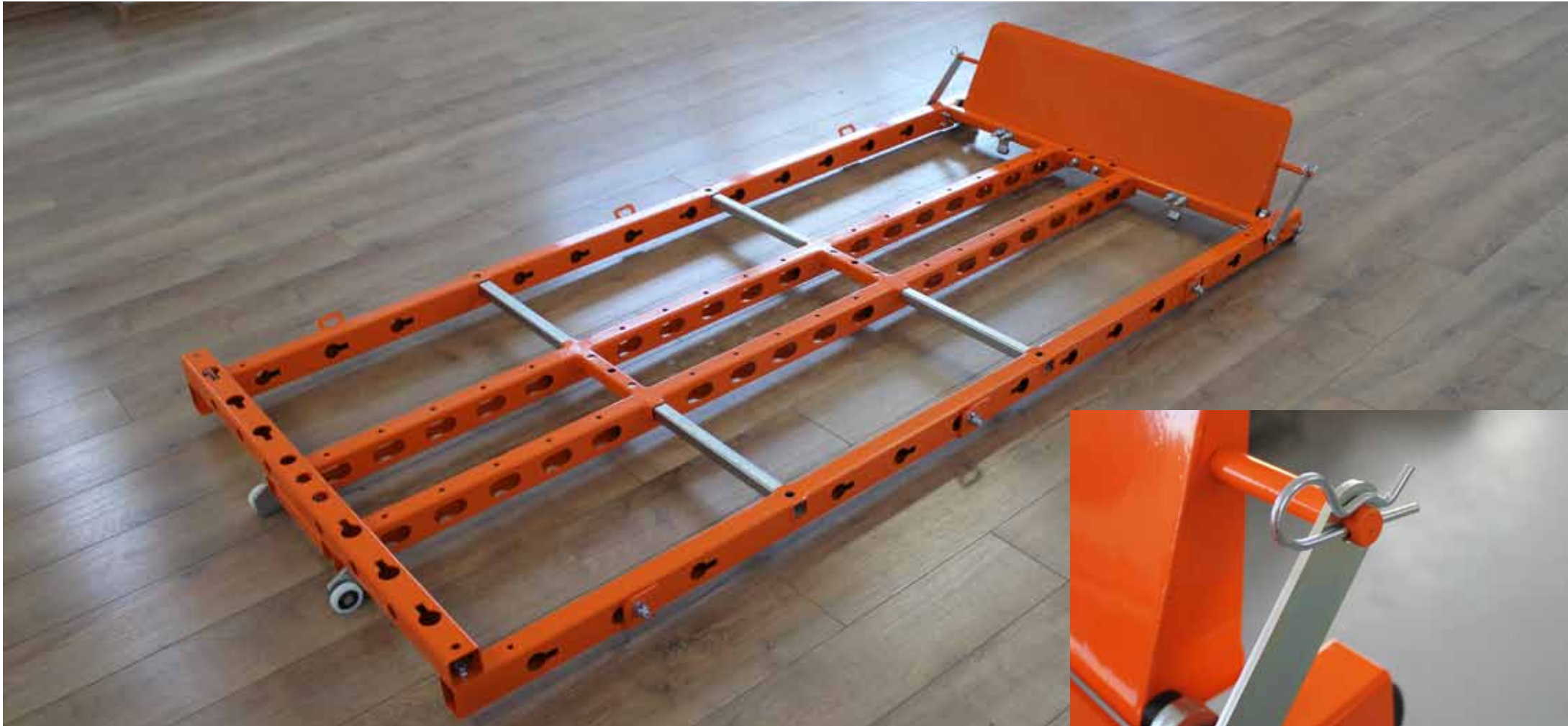
Slide the two tailgate bolts through the tailgate hinge and lock from the back with lock nuts. Use the tailgate lock to hold the tailgate up while tightening the two bolts on each side.

After the two bolts are tightened, THEN TIGHTEN ALL CHASSIS BOLTS.



If you need strap brackets, now you can attach these where you need on the side bar or/ and the front bar.

Please note, on earlier series there is a washer provided with the strap bracket shoulder bolt. This washer is needed because the shoulder on the M12 shoulder bolt is too long.



The AC 008 cargo loader should now look like this. Make sure all bolts are tightened.



Detach both lock brackets from both sides of the ramp.



Detach both lock brackets from both sides of the bottom ramp, and also the back rollers.

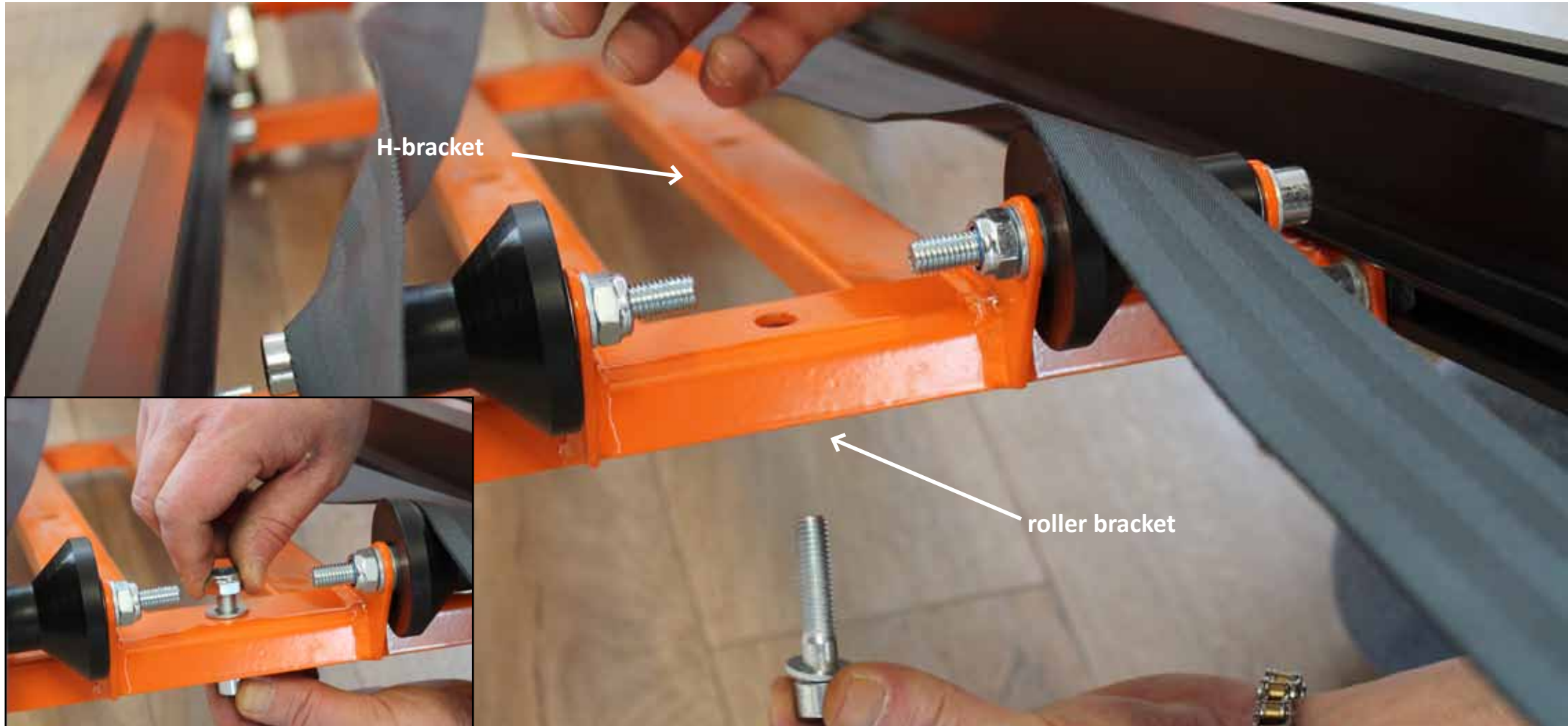
Also detach both top ramp stoppers from the top ramp, so that the wheel chock can slide off the top ramp.



Run the ramp to discharge, slide the wheel chock off the rails. Remove the strap plate and remove the wheel chock.

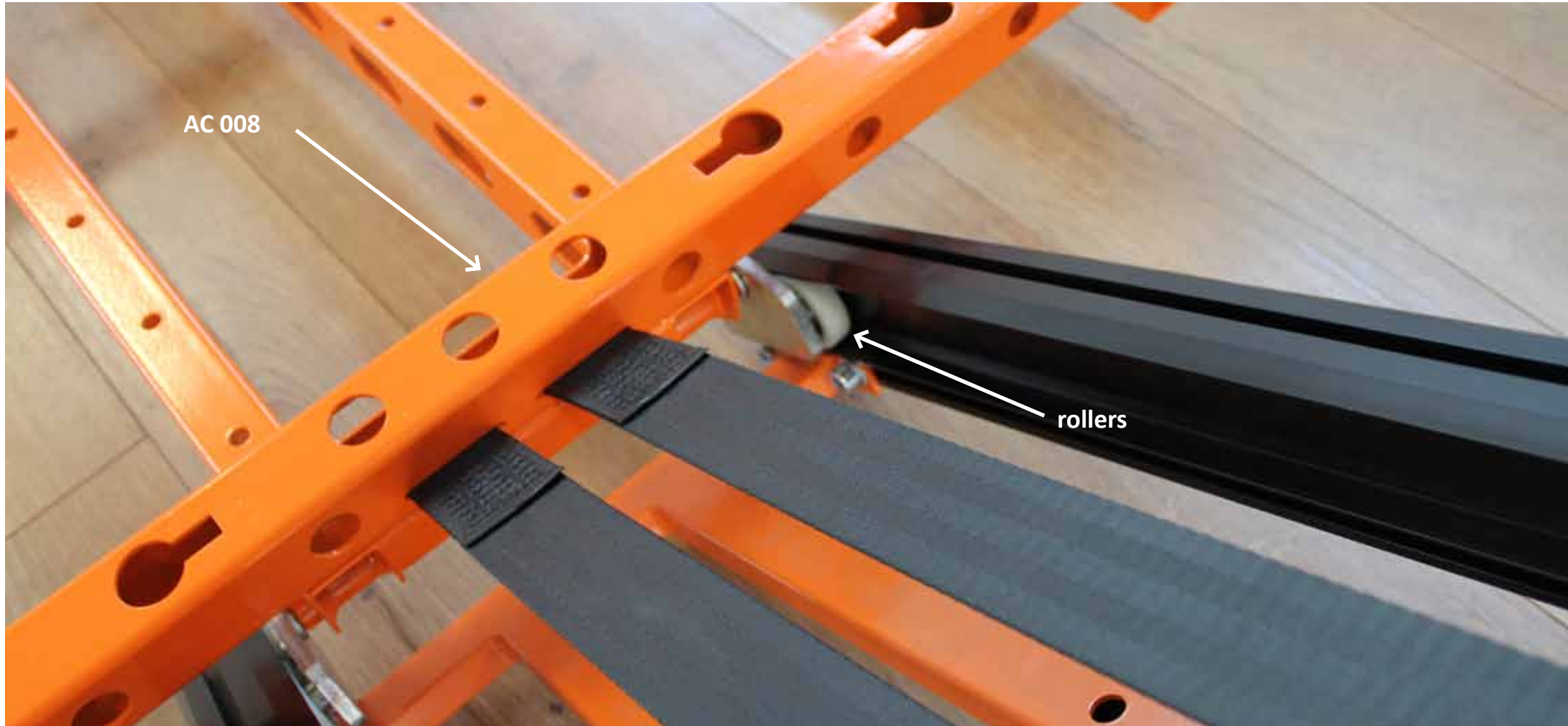


Place the AC 008 on the ground. Slide the two straps through the slits in the front bar. Slide the strap plate through the strap loops.



Place the roller bracket on top of the H bracket. Slide the M10 allen head bolt from the bottom. Secure with a flat washer and M10 lock nut from the top.

AC 008 attachment to standard AUN ramp

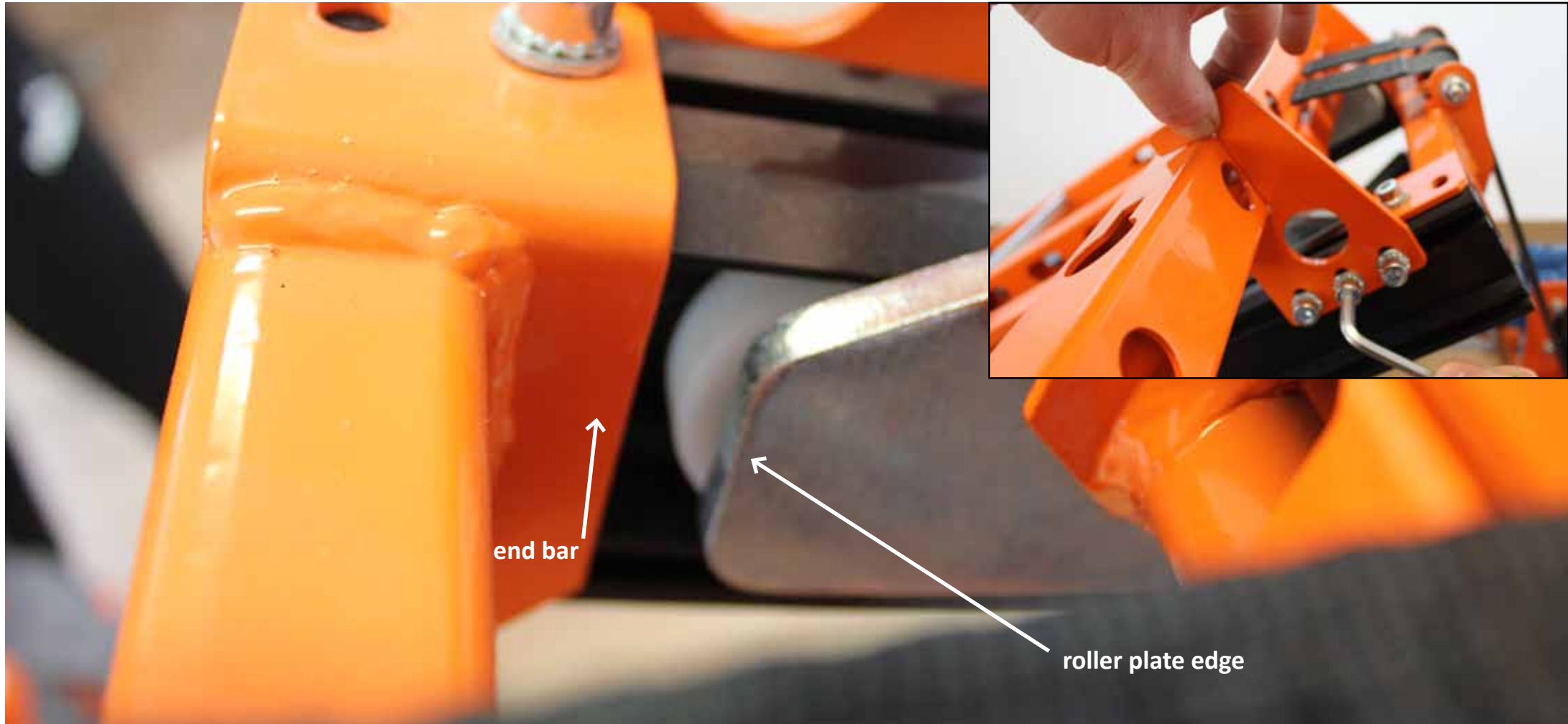


Make sure the rollers track right inside the tilt frame beams and run the ramp to raise the AC 008 about halfway up the tilt ramp.



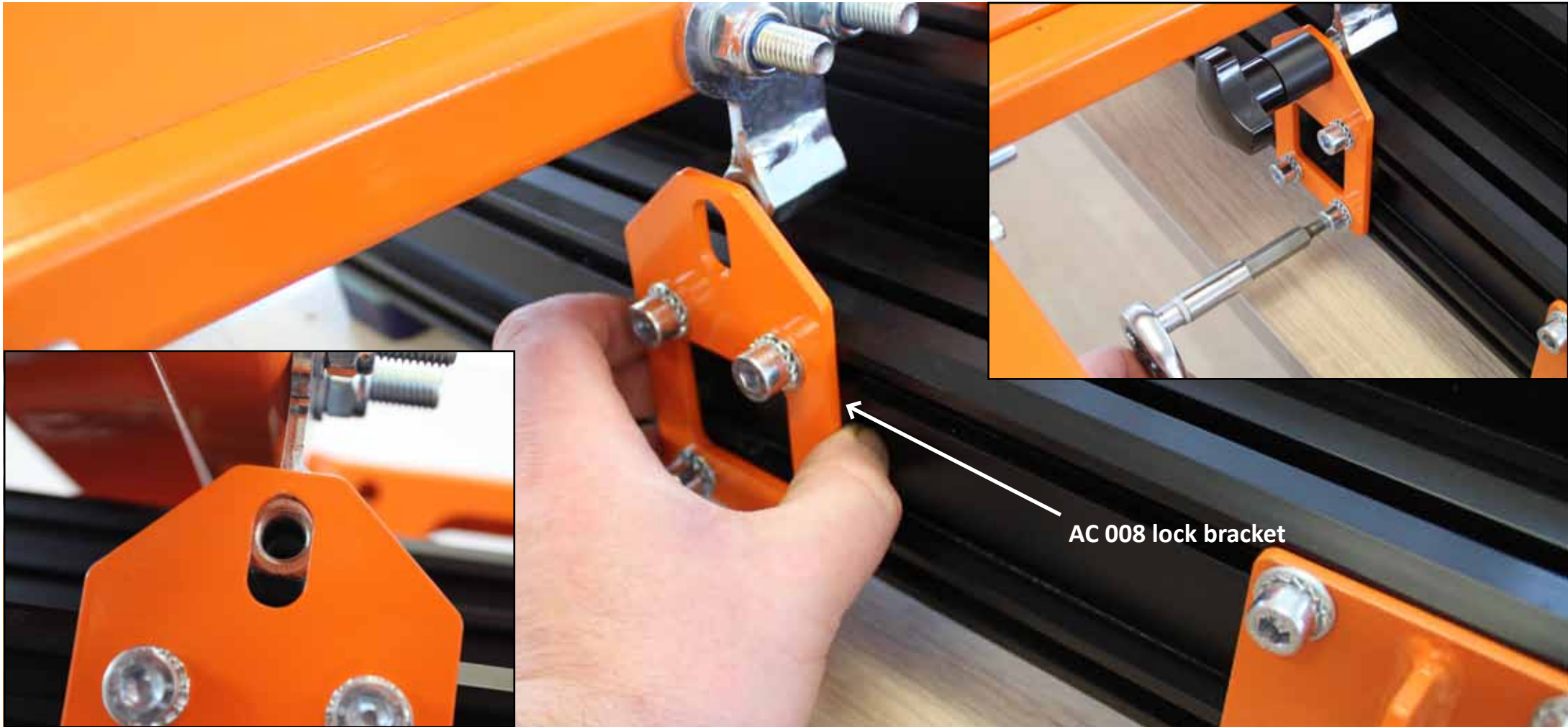
Detach the original ramp hooks and slide the AC 008 hooks through the rails. Finger tighten the M8 bolts, do not fully tighten yet.

AC 008 attachment to standard AUN ramp



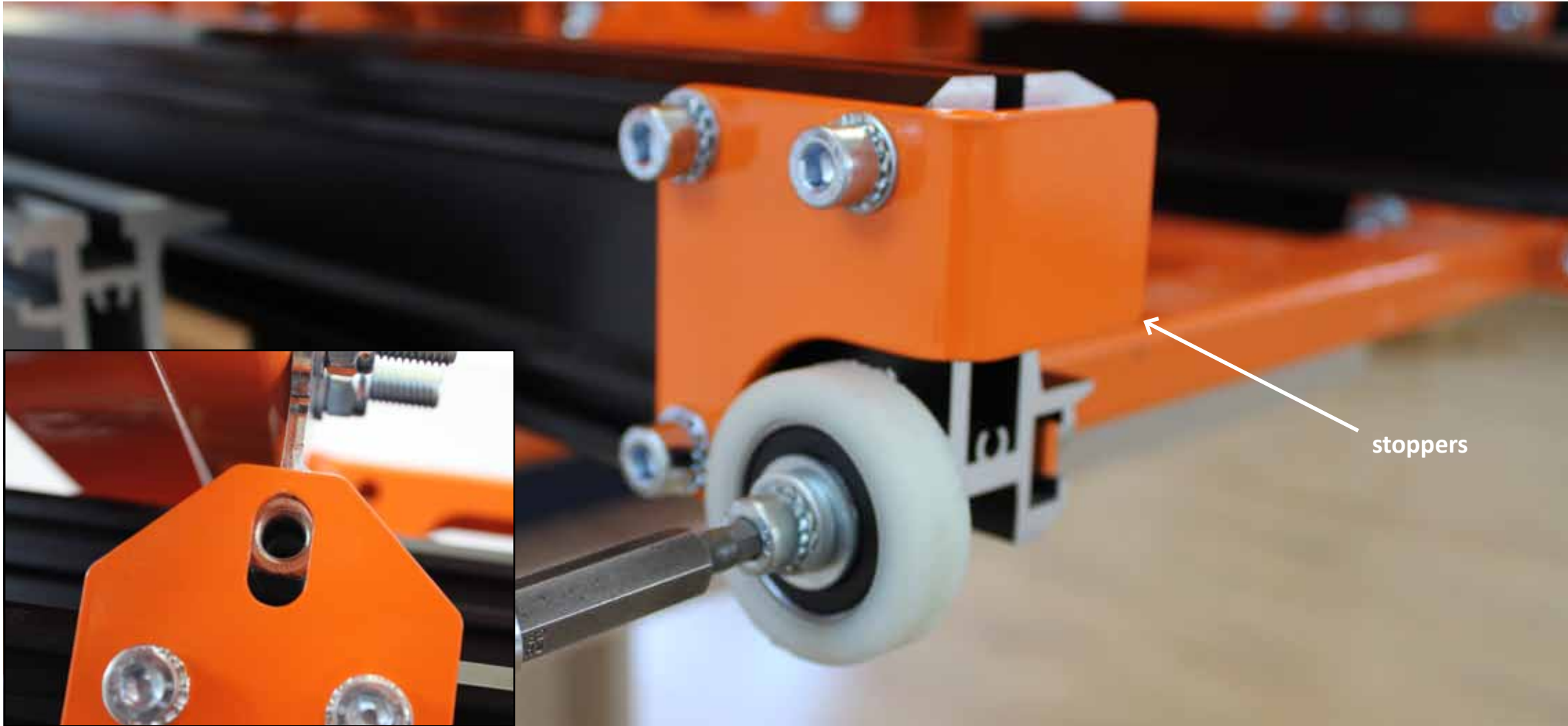
Run the ramp to load the AC 008 until the roller plate edge of the AC 008 almost touches the end bar of the ramp. Leave a small gap so that these two components do not touch.

Then tighten the AC 008 hooks in this position.



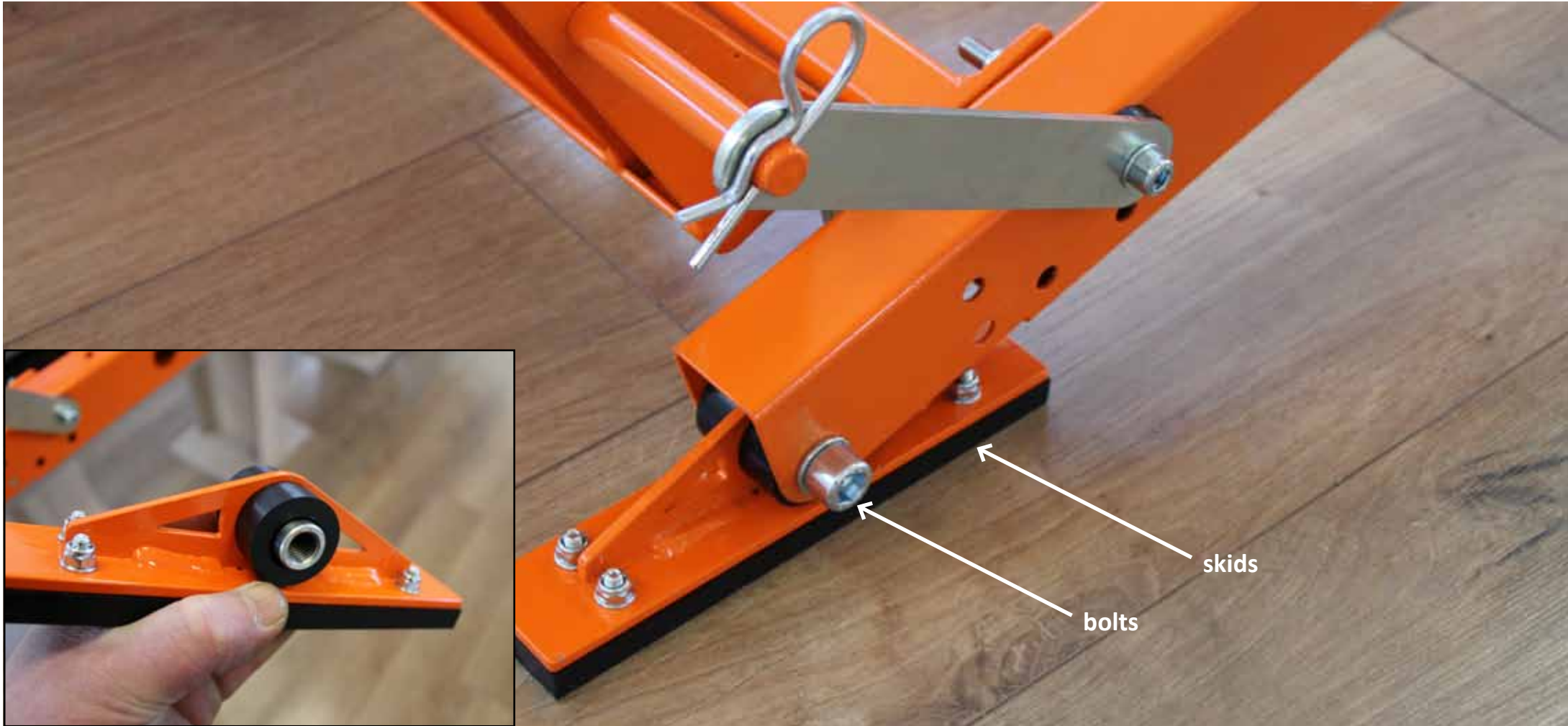
Slide the AC 008 lock plates from the back of the bottom rails until the oval hole in the lock plate lines up with the zinc plated lock plate of the AC 008.

Screw the lock knob into the locks to keep these two brackets lined up while you tighten the four bolts of the lock bracket.



Attach the end stoppers and the rollers to the ramp.

Done!



If you need to use skids, remove the bolts for the rollers. Extract the roller, keep the steel axle.

Slide the steel axle through the skid bushes, place inside the side beam and lock the bolts back. The plastic skid lining is replaceable, you can make your own if you wish to have larger or longer skids.

Note - these skids are experimental and are provided free of charge with the first batch of AC 008 units. Feed-back is appreciated.